



evolution

dog wash



SPECIFICATIONS



evolution

dog wash

SPECIFICATIONS

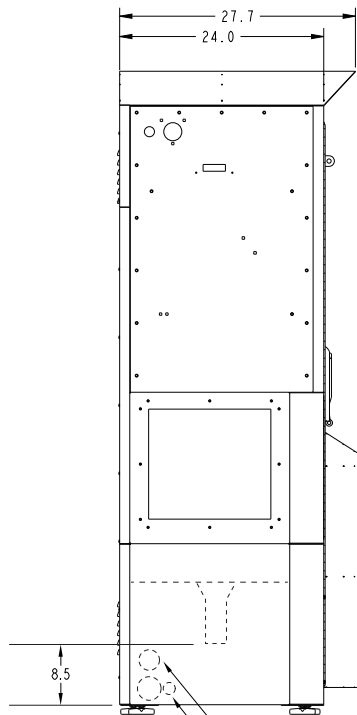
- Cold and Hot Water Supply Connection (Hot Water Optional)
Standard ¾" Male Connection
- Waste Drain Connection (2" Threaded Male)
- Electrical Requirements:
Dedicated 120V 30 Amp hard wired connection
Optional Internal Hot Water requires an additional 120V 20 Amp circuit
- Water Usage Estimate
1.7 – 2.5 gallon per minute
Average wash water time per dog ~ 5min
- Overall Dimensions:
79.5 Wide, 74.6 Height, 27.7 Deep
- Center of Drain Location
21.9 in from left side, 12 in from back, and 8.5 in from bottom of frame
- Weight of Dog Wash Approximately 750 Pounds
- Weight of Crated Dog Wash Approximately 1000 Pounds
- Estimate Cost of operation (electric, water, product)
Total cost can vary between \$1.00 - \$1.50 per wash



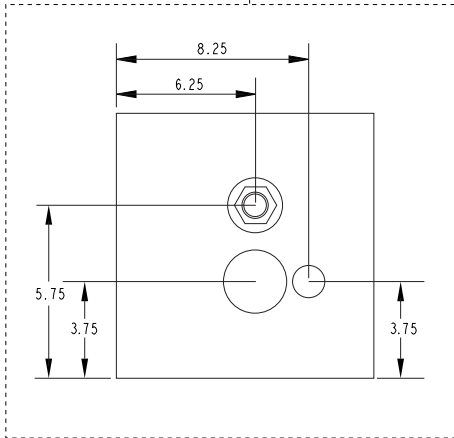
evolution

dog wash

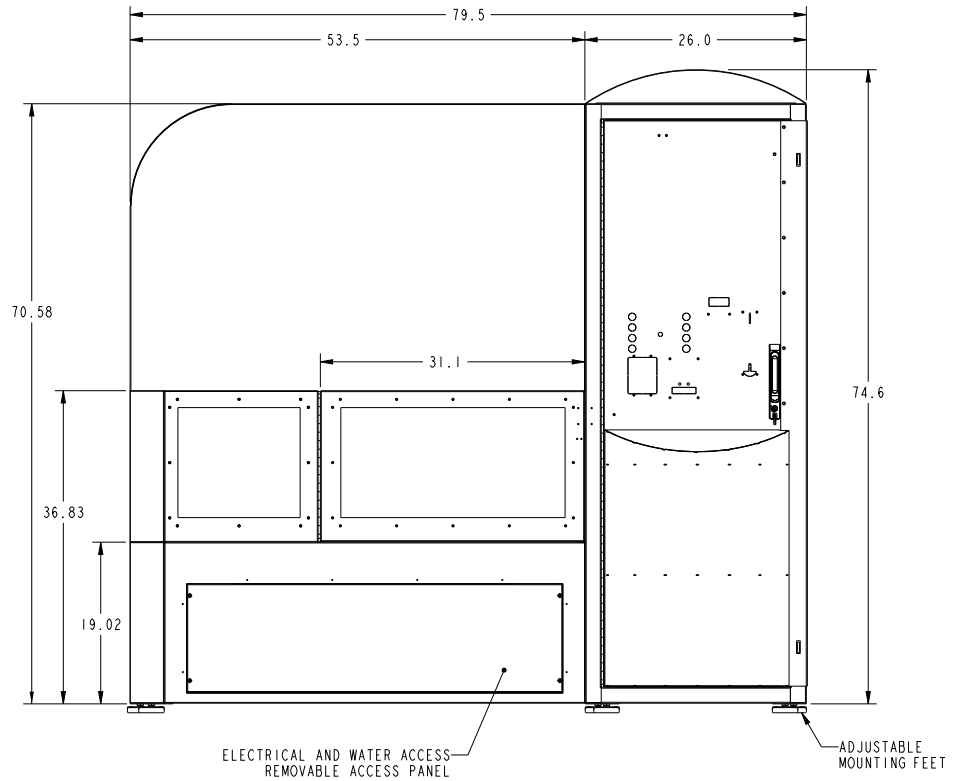
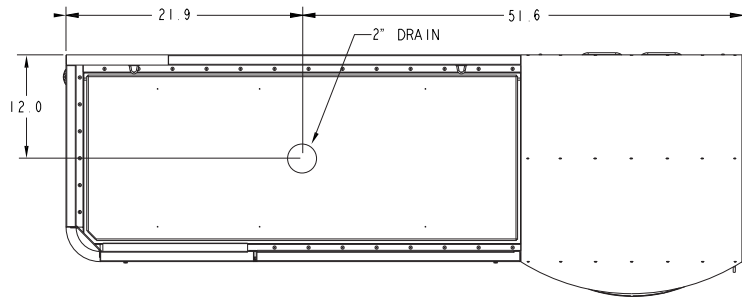
DOG WASH PLAN VIEW



WATER SUPPLY CONNECTIONS*



*WATER SUPPLY LOCATED INSIDE CORNER OF CABINET

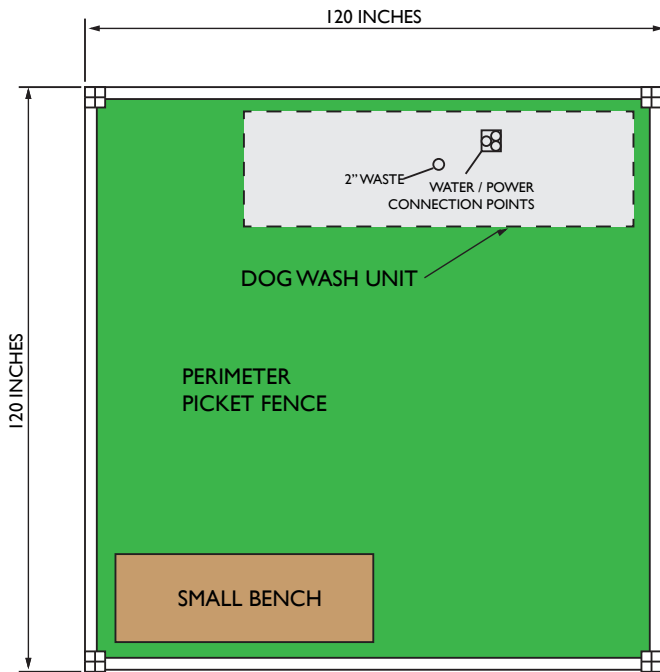




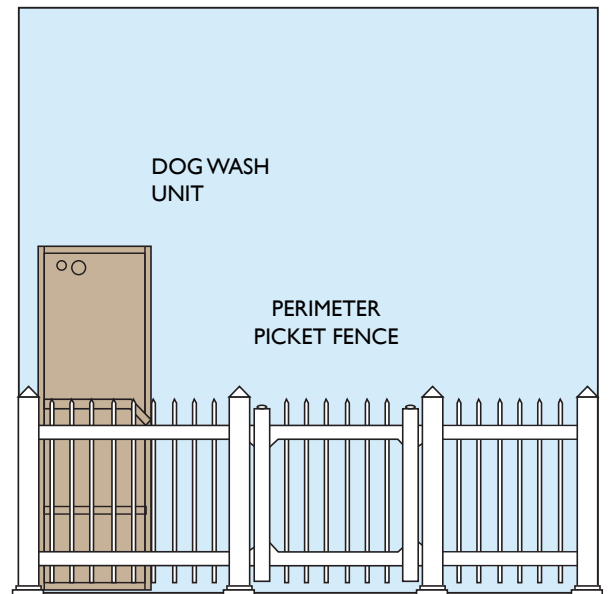
evolution

dog wash

SUGGESTED DOG WASH AREA



SUGGESTED DOG WASH AREA



STANDARD SYSTEM REQUIREMENTS

POWER 1	110V	30A Only
POWER 2	110V	20A Optional Hot Water
WATER 40 PSI	HOT	1/2" Ball Valve
	COLD	1/2" Ball Valve
WASTE	2" Diameter Outlet	