



evolution

dog wash



SPECIFICATIONS



evolution

dog wash

SPECIFICATIONS

- Water Supply: Hot and Cold Standard ½" Male Connection
- Drain: Standard Waste Drain 1.5" Male Connection
- Electrical Requirements:
 - Dedicated 120V 30 Amp hard wired connection
 - Optional Internal Hot Water requires an additional 120V 20 Amp circuit
- Water Usage Estimate
 - 1.7 – 2.5 gallon per minute
 - Average wash water time per dog ~ 5min
- Overall Dimensions:
 - 79.5 Wide, 74.6 Height, 27.7 Deep
- Center of Drain Location
 - 21.9 in from left side, 12 in from back, and 8.5 in from bottom of frame
- Weight of Dog Wash Approximately 750 Pounds
- Weight of Crated Dog Wash Approximately 1000 Pounds
- Estimate Cost of operation (electric, water, product)
 - Total cost can vary between \$1.00 - \$1.50 per wash

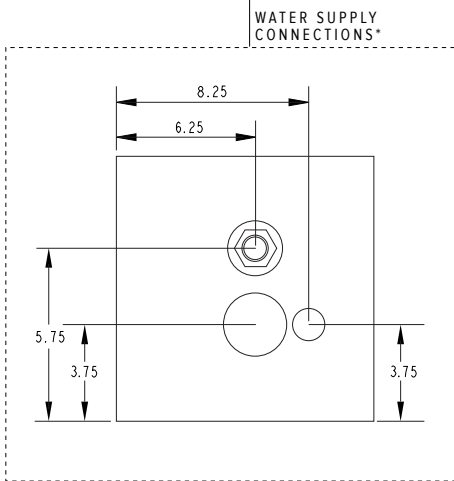
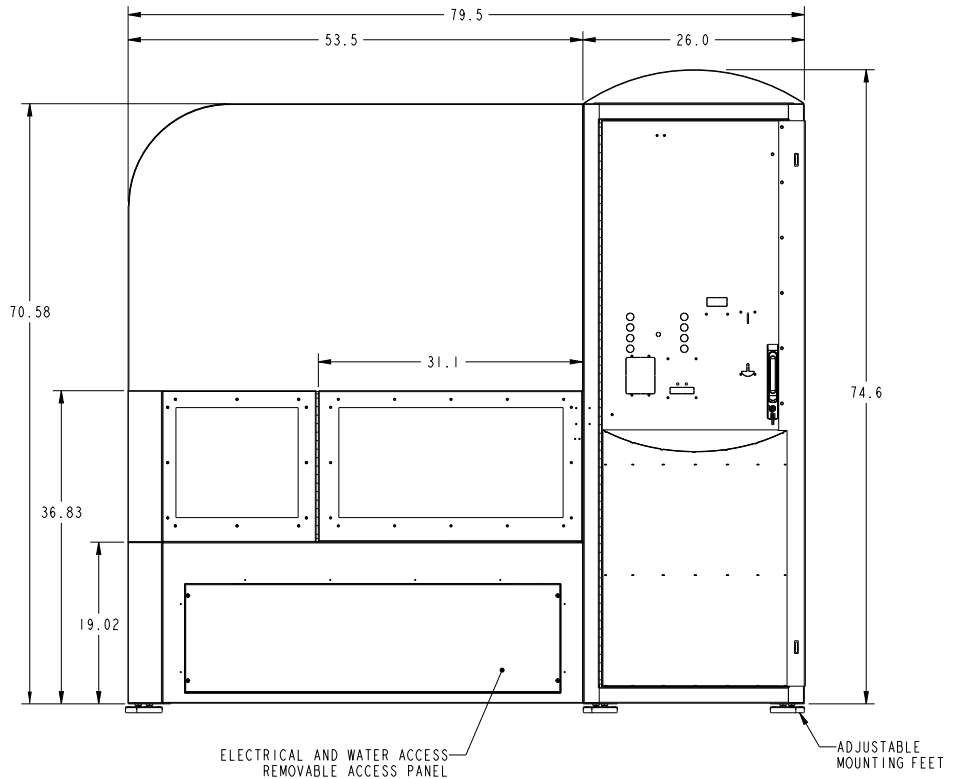
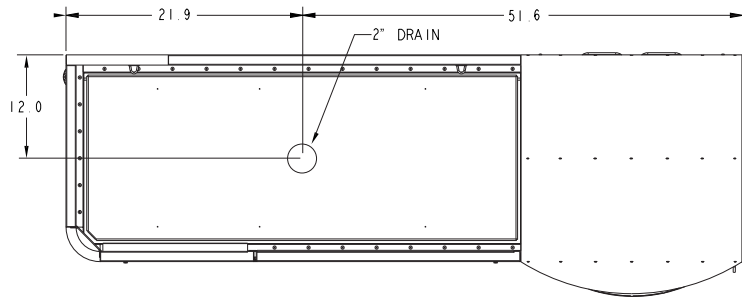
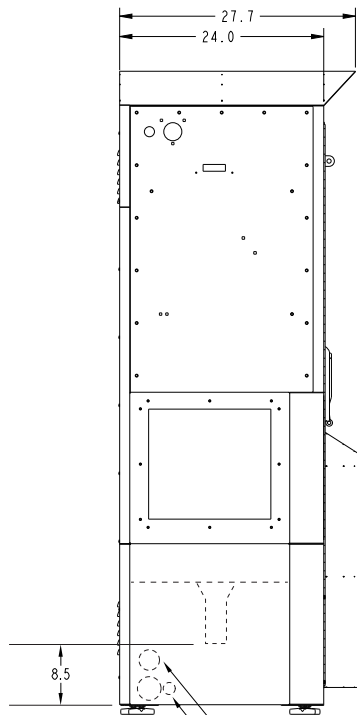
Every Evolution Dog Wash comes with a 10-year warranty on the frame and a three-year warranty on parts. Warranty is considered voidable if nonapproved soaps and products are used in the dog wash. Only use soaps and products supplied from Evolution Dog Wash to maintain the factory warranty. Order online at evolutiondogwash.com.



evolution

dog wash

DOG WASH PLAN VIEW



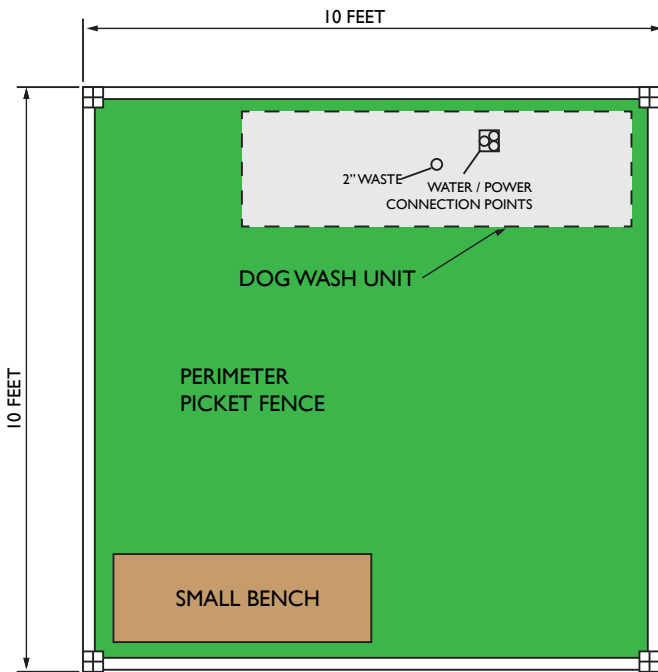
*WATER SUPPLY LOCATED INSIDE CORNER OF CABINET



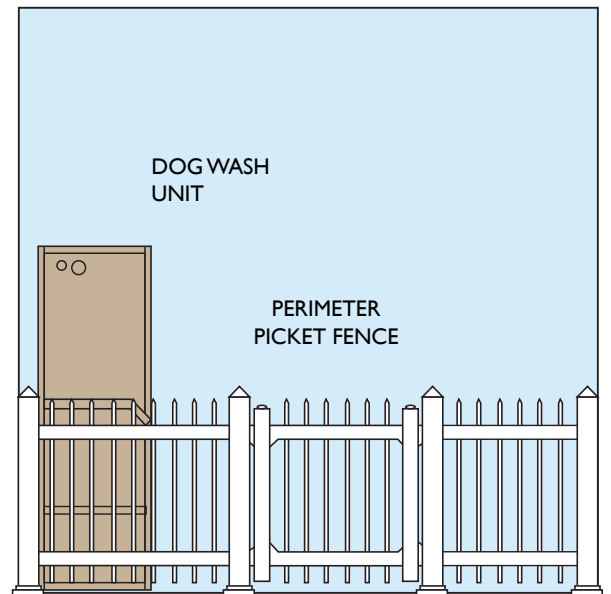
evolution

dog wash

SUGGESTED DOG WASH AREA



SUGGESTED DOG WASH AREA



STANDARD SYSTEM REQUIREMENTS

POWER 1	110V	30A Only
POWER 2	110V	20A Optional Hot Water
WATER 40 PSI	HOT	1/2" Ball Valve
	COLD	1/2" Ball Valve
WASTE	2" Diameter Outlet	